




PAS68/IWA14 (7,5t@48kph) ULTRA SHALLOW ROAD BLOCKER



This revolutionary anti ramming road blocker has been designed to become a leader in serviceability and technology - a powerful and easy to install shallow high security road blocker by TiSO company.

Having just 200 mm foundation depth, this barrier is suitable for installation in areas where there are difficulties with underground infrastructure, citizen areas for example.



UNIQUE ENGINEERING SOLUTION WITH ULTRA SHALLOW INSTALLATION DEPTH

Ultra shallow TiSO road blocker is ultra simple and quick to install, and requires only one concrete pouring and simple reinforcement design, which significantly reduces the cost of construction work. It also minimizes the time required on site compared to installing traditional road blocker structures.

PAS68/IWA14-1 ULTRA SHALLOW ROAD BLOCKERS



Ultra shallow road blockers were designed to protect the perimeter of the protected area. This blocker can stop truck of 7 500 kg (7,5t) mass driving at 48 kph (30 mph) speed. This is confirmed by successfully passed tests BSI PAS 68:2013 and IWA 14-1:2013. Such a blocker fully meets the requirements for the protection of highly classified objects.

In addition to anti-ramming properties, this blocker has another advantage - this is an ultra small installation depth of 200 mm. The completely innovative design of this lock

allows you to combine its main anti-ram function with the simplicity and speed of installation.

pre-test



post-test



Test Conditions

Standards:	BSI PAS68:2013 and IWA14-1:2013
Vehicle type:	N2/N2A – 48 km/h
Vehicle mass:	7 564 kg
Impact angle:	90°
Impact speed:	48,6 km/h

Test Results:

Vehicle penetration (static):	PAS: -2.1 m and IWA: -0.9 m
Vehicle penetration (dynamic):	PAS: -1.9 m and IWA: -0.7 m
Major debris:	No major debris
Vehicle restrained and immobilized:	Yes
Penetration rating:	Blocker V/7500[N2]/48/90:-1.9/0.0
Performance rating:	Blocker V/7200[N2A]/48/90:-0.7

ULTRA SHALLOW ROAD BLOCKERS

FOR PEOPLES' SAFETY

INSTALLATION IN URBAN AREAS

Installing heavy duty road blockers within urban areas can pose problems due to shallow underground services such as electrical and water facilities. As a result – the installation of road blockers with deep foundations can be problematic. At TiSO we have solved this problem as we have developed an ultra-shallow mounted road blocker. The size of the static underground part of road blocker is only 200 mm. Even though the foundation base is shallow this model has been successfully tested in accordance with international standards PAS68 and IWA14-1.

INSTALLATION SPEED

The rapid installation of this type of blocker has several significant benefits. It reduces installation time and contractor costs; road closures and traffic delays are reduced. The shallow road blocker kit has been manufactured so that the installation of this model is simple and quick.

EASY TO MAINTAIN

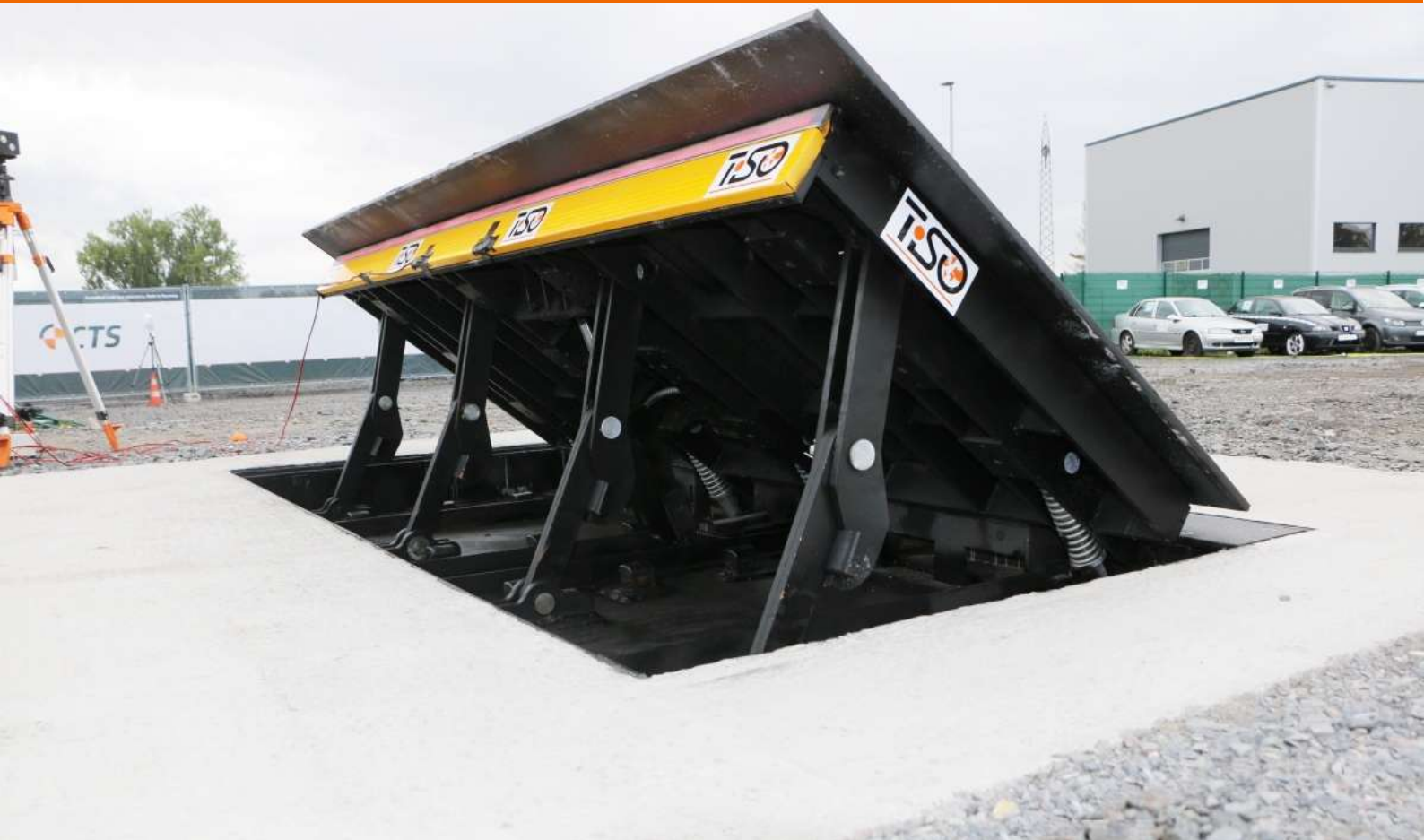
The shallow blocker has an innovative design which means the maintenance of the shallow road blocker is quick and easy. The dynamic part of the blocker is protected by a safety skirt it creates a telescopic effect which enables the height of the blocking part to be significantly greater than the size of the static depth of the below ground part. The protective curtain can also be removed if required.

KEY FEATURES

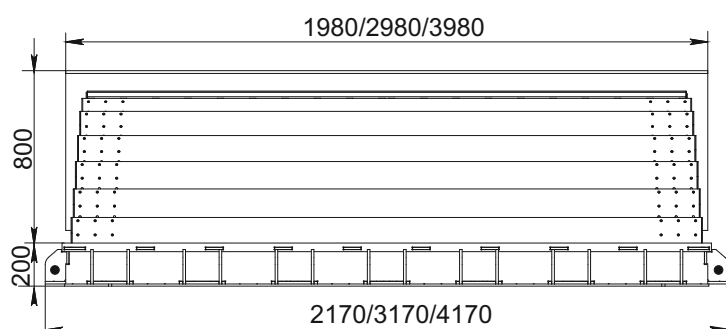
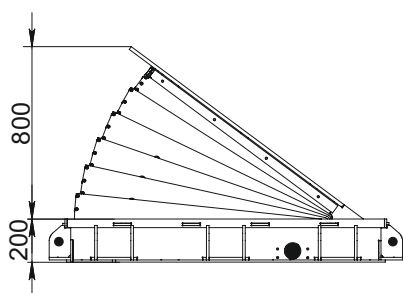
OF ULTRA SHALLOW ROAD BLOCKER

- Ultra shallow road blocker has a hydraulic drive.
- Installation is simple and economical, requires only concrete pouring.
- The upper plate on the dynamic part is made of a cast sheet of structural steel. This enhances the anti-ramming properties of the road blocker. And also provides its long service life when vehicles regularly pass through the blocker.
- The safety skirt could be removed easily, if necessary.
- Provides high protection of the site, which is confirmed by successfully passed crash test PAS68:2013 and IWA 14-1:2013





ULTRA SMALL INSTALLATION DEPTH - 200 MM



safety skirt goes as an option

SPECIFICATIONS

Installation type: Shallow mounted

Drive: Hydraulic

Load per axle, t: 15

Rising/Lowering time, sec: 3,5 (1,5 with EFO) / 3,5

Operating temperature, °C:** -40/+40

Power supply: 1 phase 220 V, 50/60 Hz
3 phases 400 V, 50/60 Hz

Protection level: IP 67 for road blocker
IP 54 for control box

Materials: Structural steel (galvanized and powder coated)

*for temperatures lower than -10 °C use the heating device
for temperatures higher than +40 °C use the cooler device



TiSO Global

Kyiv, Ukraine
14 Promyslova str., 02088
tel.: +380 (44) 291 21 11
e-mail: sales@tiso.global
www.tiso.global

TiSO ME

Dubai, UAE
Dubai South, B4, office 231,
P.O. Box 712990
tel.: +971 (56) 799 6808
e-mail: sales.me@tiso.global
www.tiso.global

TiSO UK

Innovation Centre, Highfields Drive,
St Leonards on Sea. TN38 9UH. UK
tel.: +44 (0)1424 858120
e-mail: sales@tisouk.com
www.tisouk.com

TiSO APAC

78 Bedok North Road
Unit 14-232 Singapore 460078
tel.: +65 6256 0515
e-mail: enquiry@tisoapac.com
www.tisoapac.com